

Wilmington Sail and Power Squadron
DISTRICT 5
 A Unit of United States Power Squadrons®

THE LUBBER'S LINE

VOLUME 76, ISSUE 2

August-September 2014

INSIDE THIS ISSUE:

<i>Commander's Message</i>	2
<i>Who's Who</i>	2
<i>Executive Dept.</i>	13
<i>Administrative Dept.</i>	13
<i>Education Dept.</i>	14
<i>Cooperative Charting</i>	15,16
<i>WSPS Birthdays</i>	17
<i>New Members</i>	17
<i>Calendar</i>	18

2014 WSPS Summer Cruise

Before getting into the article itself, noteworthy is that this year health considerations have once again come into play keeping some of our perennial cruisers from participating in this year's cruise. Bart Wilson on *Pleasure's Mine* suffering a back injury and P/C Marty Wagner aboard *L'Chaim* had a lingering health issue which compelled both to cancel the cruise at the last minute. Micki Hall on *MR~MILK* fell ill mid-week and had to return home. Well wishes to all of you – you were missed! P/C Richard and Terry Butler (Terry recovering from a broken bone in her foot) had to “scratch” the *Eau de Vie* from the boat roster. They were able to successfully “jump” ship finding cruise passage as crew members aboard the *Mystic Star* of P/C Donna and Bill Zimmerman.

This year we had a fresh group of first-time cruisers. The committee wishes to thank Lisa and Lou Rich aboard *Anna Marie*, Jean Marie and John Bailey on *Novus*, Leslie Brower and Bruce Wyngaard aboard *We Go Now* and P/C Mark and Chris Atkinson on *Willow* for their participation. Welcome back to the *Rev-erie* after a few years' absence with P/R/C Steve Leishman and Joan Myer on board. Bob Danehower and Barbara Bishop on *BOB RA ANNE* barely made it back in time for the kickoff from their winter trip South.

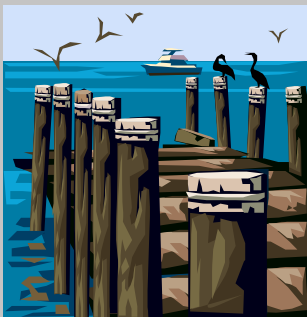
Saturday - Once again the Chester River overlook at Lankford Bay Marina was selected as the ideal spot for our 2014 Cruise Kick-Off Picnic hosted by Commander Don Engler. In addition to *Journey* with Lt David and Ann Bender whose home port is Lankford Bay Marina, three other boats with crew were berthed for slippage at the kick-off site, *Estelle* with Lt Tom and Kay Webster and accompanying family, P/C Mike King and Wendy Shipman aboard *Sea Lion* and *Willow* with P/C Mark and Chris Atkinson.

This day was but the first of a week filled with memorable food. WSPS cruisers, their guests, and shore travelers made their way to the kick-off festivities. Camaraderie, food, and great weather were the highlights of this festive day. Special thanks to KIAs P/C Jim Robinson, wife Zelma, and sons Charlie and Jimmy for organizing such a successful event.

Sunday - At 0800, the fleet was summoned to “check in” for the first of the daily WSPS radio net role calls by Directed Net Coordinator Jim Ennis on the *Nauti-Gal*. This day, Sunday, is generally accepted as the first day afloat for the cruise. On this morning the fleet made its way to the beautiful Selby Bay off South River on the western shore for the annual Dinner on the Hook with pre-assigned raft-

(Continued on page 4)

**Commanders
 Cruise
 Kick-Off
 Photos
 Pages 2 & 3**



**Cruise Photos
 Pages 8-12**

Wilmington Sail and Power Squadron**Commander**

Cdr. Donald R. Engler, AP
919 Moores Drive
New Castle, De 19720
don@englers.com

Executive Officer

Lt/C John S. Ross, AP
24 North Star Road
Newark, DE 19711-2937
302-235-5856
johnross3@mail.com

Administrative Officer

Lt/C John E. Koval, Jr., P
28 Nancy Street
North East, MD 21901-5133
410-287-2346
rogudley@netscape.net

Education Officer

P/C James Robinson, AP
122 Fairthorne Street
Kennett Square, PA 19348-2847
610-444-5155
jimrobinson37@aol.com

Secretary

Lt/C Barbara L. Sharpless, P
2 Hailey's Trail
Newark, DE 19711-3006
302-239-7995
bdsharpless@verizon.net

Treasurer

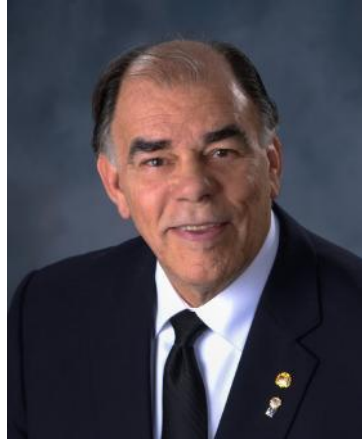
P/C Martin G. Wagner, AP
Westover Hills
1013 Overbrook Rd.
Wilmington, DE 19807-2235
mgw1013@comcast.net

Lubber's Line Editor

Lt/Pamela M. Orris, P
11 Neponset Rd.
Wilmington, DE 19810
302-351-8395
pamorris1@verizon.net

**Visit us on the web at:
www.wspsoaters.com**

The Lubber's Line is a publication of the Wilmington Sail and Power Squadron published the first week of January, March, May, August, and October.

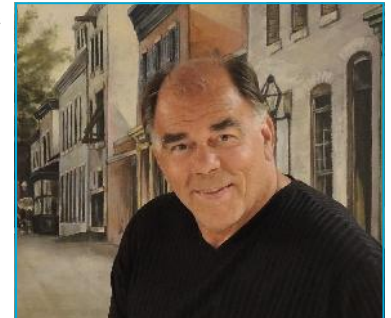


COMMANDER'S MESSAGE

Donald R. Engler, AP

Midsummer's Dream

If you have ever been elected to a position of authority, then you have planned, re-planned, schemed, and even *dreamed* of events working-out before your very eyes. This year the executive board and myself have rethought many of the activities for WSPS. We don't know exactly what will work and what will not, but we are trying to move forward in our planning. The "Crab Feast" quickly approaches on 2 August held at the Rock Hall Community Center. I hope you will consider attending if you enjoy eating crabs. Actually if you don't care for crabmeat, we would still like to see your face. Reservations are being taken by our Executive Officer John Ross via the E-vite System. Later that month I have suggested a raft-up at Still Pond which is sea nettle free swimming, only tall blondes in skinny bikinis cleaning Jubilee's bottom. So join us (the blonde is my wife Sue) there on 23-24 August. Perhaps we can have several raft-ups and a dinghy drift? More later, via E-vite.



Congrats to P/C Jeff Russell, AP pictured to the right receiving all the pertinent materials to prove his 25 merit marks. Jeff's command was the Kingsway Power Squadron 1993-94.



(Continued on page 3)

(Continued from page 1)

ups. Since bad weather forced an infrequent anchorage cancellation last year, rescheduling the location seemed in order for 2014. KIAs for the day were Lt/C Barbara Sharpless aboard *Knot Again* and Lt Carol Hanson on *Weatherly*. Some last minute raft reassignments were necessary to compensate for a missing *Jubilee*. After successfully addressing some unforeseen cooling system issues and a long sail day, crew and craft were able to join us on Monday. Weather cooperated and all enjoyed the raft-ups and food.

Monday - On Monday we headed across the Bay to the eastern shore and St. Michaels. KIA for the day was P/C David Sharpless aboard *Knot Again*. This day also marked the first sail rallye of the cruise. (See Bill Zimmerman's rallye re-cap later in this article.) On deck for our visit to St. Michaels was a private two and a half hour tour of the Chesapeake Bay Museum (complete with ferry ride from St Michaels marina to the CBM site). WSPS and active CBM Member Joe Irr, long time contributor to any and all things Chesapeake Bay, after making arrangements with CBM staff personally conducted the tour. Joe as usual was captivating in his presentation. His historical knowledge and sometimes anecdotal incites relating to the "hows, whys, and whens" of some of the display items made the visit truly memorable.

Later in the afternoon the cruisers gathered for a poolside appetizer/cocktail party enjoying some light fare before breaking off to enjoy more sumptuous food at their choice of one of the local eateries.

Tuesday – Tuesday found the cruisers heading back to the western shore for an anchorage in Mill Creek off Whitehall Bay. KIAs for the day, Jean Marie and John Bailey on *Novus*, rallied the group for a WSPS mainstay event-the appetizer/dinghy float. Dinner at Cantler's Restaurant followed for those choosing to eat ashore.

Wednesday – Wednesday found the flotilla anchored out for a second consecutive night in Bodkin Creek. Some of the cruisers chose to get slips for the night at the Pleasure's Cove Marina taking advantage of air conditioning, and bowing to the threat of some possibly heavy squalls predicted for the late evening (and yes the bad weather did materialize). Earlier many of the group took advantage of the nettle free waters by taking some refreshing late afternoon dips in the 70+ degree water. KIAs P/C John and Betty Ingram on *Gypsy II* were responsible for the group's shore side eating arrangements at the Cheshire Crab. A water taxi was restaurant provided for those cruisers on the hook desiring to eat ashore. The food was memorable. The positive side is that we did get a slight, albeit it temporary bit of relief from the oppressive heat and humidity when the storms passed through.

Thursday – Thursday, the first of a scheduled two day stay at the Harbor East Marina, found the cruisers, after checking in, taking advantage of the short mileage sail day by heading out in different directions enjoying the offerings and happenings that are the Inner Harbor. Several crafts and crews decided against a third consecutive night on the hook opting instead to come in to port a day earlier than they had originally planned. Heat (read as absent air conditioning on the hook) again proved a prime motivator in anchor vs marina decision making.

HEAT-HEAT-HEAT - Chuck will probably not admit giving into the heat but Captain P/C Judy Stadler prevailed; the *Wind Venture* and crew headed in to Baltimore on Wednesday one day ahead of the other cruisers taking full advantage of onboard air conditioning. *Carpe Diem* with Kim (welcome back to cruising after a knee mishap last year) and husband Mike Royal decided on tying up on an outside "T" to catch a little breeze and private time.

Friday – On deck KIAs for Baltimore were Bart Wilson and P/C Sharpless. The committee supplemented the in-place tent provided by Harbor East Marina with some additional canvas (shade) for WSPS cruisers use during our marina stay. Placement of the tents was once again dockside and afforded our cruisers a nice gathering place for impromptu get-togethers and/or activities for the duration of our stay.

(Continued on page 5)

(Continued from page 4)

A mending Bart Wilson and wife Bev drove to the closing ceremonies in Baltimore along with the Ingram's. (*Gypsy II* had returned to Rock Hall on Thursday for a little sail repair.) Following a wine and appetizer social under the tents, the 2014 edition of a long-time favorite meal of WSPS members, ribs and chicken, was once again capably provided by Adams Ribs. More good food! Dinner completed, Master of Ceremonies P/C Dennis Wallace assisted by wife Carol went to work. This was the point in time, dreaded by many, that we hoped any of our miscues, indiscretions, navigation errors, bottom bounces, etc. from wherever, whenever, had gone unnoticed by our MC. Not likely! Dennis, having called the closing ceremony to order, benefitting from a week (or in one or two cases a lifetime) of general observation, eavesdropping, resourceful fabrication, tid-bits volunteered by tattle tailing friends, and some just plain simple situation embellishment, set about accomplishing the business at hand - that of creative boat by boat public humiliation and embarrassment. Side comment - many of his friends have learned first hand that being nice to him that week especially assures them of absolutely nothing. Carol presented each boat a small gift hoping to ease some of the verbal "sting". The awards ceremony is always entertaining and well received. As usual, Dennis was on!

Rallye activities, recognition, and results for the week were shared by Lt Bill Zimmerman following the awards portion of the program. (Bill's Summary follows.) Finally, last but by no means least, the bestowing of the prestigious Chance for Romance Award. Winners of this award at the end of the 2013 cruise were Nancy and Jim Ennis. The *Nauti-Gal* crew appeared inconsolable over having to first find, then remove dust, and finally, worst of all, relinquish ownership of this prestigious award. This year's lucky recipients, P/C Sut and Lyn Anderson aboard *Freedom*, seemed overwhelmed at their having been chosen. The Ennis' on the other hand, distraught, were unavailable for comment refusing even to offer so much as a few helpful maintenance suggestions to Lyn and Sut. Hopefully, this magnificent show piece, in all its grandeur, is being prominently displayed and proudly represented at the Anderson family home.

Rallye Series Activities as Reported by Bill Zimmerman

Conditions for this year's sail rallyes were as varied as one could imagine with light air to fresh breeze in the twenty knot range to dead calm. Four rallyes were held, two with "window" timed starts in which competitors had a time range to cross the start line, and two with "reverse timed" starts where handicaps were applied to each yacht for their unique starting times for each course. Participation was excellent this year with as many as nine boats at each of the starting lines. Courses for the rallyes were laid out generally along the paths between the various evening destinations, and allowed sailors to experience some friendly competition without diverting too far from the course to their afternoon anchorages.

Monday's rallye was a pleasant surprise in that winds generally held in the five to ten knot range from the southwest despite some predictions that five knots or less was to be expected. The motor yacht *Estelle* was on station at the mouth of the South River for the start as she was on three of the four days of the sail rallyes. Even though we had non-traditional "window" starts featured, her flag signals and starting gun made for a precise and exciting beginning as we each started down the courses. Yachts made their way across the Bay on the longest course of the four planned for the week at 13.8 nm. The course had us tacking upwind for the first leg, then close reaching towards Bloody Pt. followed by a rather long downwind leg to the finish of Tilghman Pt. Although ten boats started this rallye, only four toughed out the slow downwind leg to the finish under the increasingly warm sun. *Freedom* ultimately took first honors on corrected time followed by *Weatherly*, *Mystic Star*, and *Gypsy II*. Only 32 seconds separated the 2nd and 3rd place boats on corrected time, which turned out to be an amazing come-back for *Weatherly* after she gave the rest of us a head start with an unusual tacking strategy involving the Bay bottom near the western shore!

Tuesday turned out to be a test of endurance in the Miles River. With 5 to 10 knots predicted, the start went off alright with light headwinds. By ninety minutes later we were all becalmed less than half way to the first mark. Nine yachts were out there until the rallye was called off. It was a scene reminiscent of the Age of Sail where all one could do was simply wait for a breath of air to carry us on.

(Continued on page 6)

(Continued from page 5)

Another sunny day greeted us Wednesday as we made our way north under the Bay Bridge from Whitehall Bay to Bodkin Creek in increasing west winds after a reverse timed start. The first short downwind leg in light air proved tricky to negotiate with the flood tide building. Then on a reach up the Bay and north of the bridge, the wind built to 15-20 kts, making for the most exciting sailing of the week, and many of the boats converged at the second to last mark. The final leg had us tacking into 22-26 kts of apparent wind and heavier boats took the advantage. *Mystic Star* came in second to *Jubilee* by only a few boat lengths coming from long legs on opposite tacks, followed by *Weatherly*, *Gypsy II*, *Freedom* and four other boats.

Thursday was a welcome cooler, more overcast day with northwest winds in the Patapsco River. The course was mostly upwind and south of the ship channel for the reverse start in which five yachts completed the course. *Freedom* again took first place which clinched their victory for the week's rallye series. Many of us seemed to have difficulty getting up to the start line by our assigned start times in order to take advantage of our handicaps—a lesson that we may hope to have learned! Congratulations go to Sut & Lyn Anderson of *Freedom* for a superb showing for the week and to all participants making this a thoroughly enjoyable rallye series. Special recognition goes to first time cruisers aboard *Novus* and *We Go Now* who participated in all of the rallye events.

2014 WSPS Cruise Closing Comments:

The camaraderie within this group of old and new friends is what makes this week afloat a truly special event. We again had good participation in our competitive sailing activities, even though the weather at times was uncooperative. The committee and the entire sailing contingency thank Sailing Chair Bill Zimmerman and his committee, Don Engler, John Ingram, and Tom Webster, for their ever present enthusiasm and expertise in producing the sail rallye format.

Once again, as in many previous years, the itinerary provided the KIAs with a great list of available eatery options not only for the cruisers, but also for attendance by land traveling members as well. The food once again this year was incredible.

The dedication, coordination, commitment, and participation by everyone especially the Cruise Committee, the KIAs, Activity Chairs, and all of the volunteers is what makes this week afloat what it is! **Superior Effort!!!**

EXTREMELY WELL DONE!!

The committee is always interested in having more and more people participate, especially land cruisers. Interested in possibly participating, next year, land or sea; we would like to hear from you. Please forward any cruise feedback or suggestions to P/C David Sharpless.

Cruise Acknowledgements: Jim Ennis – once again an excellent Directed Net; **Don Engler** – for his usual superior job on the printing of this cruise book and also for design of the front and back covers; **Carol Hanson** – food and gift management; **Barbara Sharpless** – for assembling a great cruise book; **Lou Rich and once again Don Engler** – for our “T” design; **Bill Zimmerman** ably assisted by **John Ingram, Don Engler and Tom Webster** – stewardship of Rallye coordination and PHRF Handicaps; **Tom Webster** – Rallye Committee Boat; **Joe Irr** – for efforts in quite simply making the Chesapeake Bay Museum tour happen; **Geri Walker** – Captains' Meeting site procurement; **KIAs and Committee Members** – an incredibly fine job coordinating all aspects of this cruise by everyone involved. **A special bit of recognition** to land traveling Committee members Maggie and John Koval, John Ross and Pat Maher, and KIAs Zelma and Jim Robinson who, while unable to participate in the week long cruise by boat, did participate in the kick-off, and to shore goers Mary and Carl

(Continued on page 7)

(Continued from page 6)

Stacey, Anne and Mike Minard, Pam and Bill Orris, Gail and Jeff Russell, and Janet and Jack Bryson who showed up to help give the cruisers a sendoff. Thanks to Charlie and Jimmy Robinson for their ongoing support and assistance whenever and wherever needed-year after year.

WSPS 2014 Cruise Committee

Jean Marie & John Bailey - *Novus*
Sue & Don Engler - *Jubilee*
Nancy & Jim Ennis - *Nauti-Gal*
Carol Hanson - *Weatherly*
Betty & John Ingram - *Gypsy II*
John E. Koval - *Just Cause*

Zelma & Jim Robinson - *Portabella*
John S. Ross - *Wake This Way*
Barbara L. Sharpless - *Knot Again*
Dennis M. Wallace - *Weatherly*
Bev & Bart Wilson - *Pleasure's Mine*
Bill Zimmerman - *Mystic Star*

2014 Cruise Chairman

C. David Sharpless - *Knot Again*

P/C C. David Sharpless, AP

Lt/C Barbara Sharpless, P

Photo credits: Cdr Don Engler, AP, Lt Sue Engler, P, P/C Dennis Wallace, P











Education Department

It's time to think of education courses. Fall classes will start 9 September 2014 at 1900 and will be held at the A.I. duPont High School. SEAMANSHIP, a prerequisite for obtaining the grade of AP, will be offered to all members at a cost of \$55/per student. Interested? Please reserve your spot by calling the undersigned by 1 August 2014. Each class we offer is always open to any member seeking some revisiting of course content at no charge. No certification classes have been scheduled for the fall.

The two module Sail course (101 Basic Sail and 102 Advance Sail) is tentatively scheduled for 3 February 2015 starting at 1900 and will again be held at A.I. duPont High School. Refer to page 25 in the WSPS Yearbook for course highlight overview. If interested, please make a pre-reservation call to the undersigned by 1 January 2015 as lead time for Education Department material from National can stretch out to 30 days. If you have any interest or questions in either of the above courses or any subject that may be suitable for seminar formatting, please contact Jim Robinson at 610- 444-5155 or jimrobinson37@aol.com

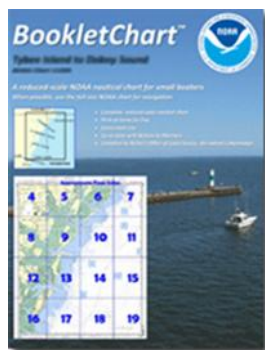
*P/C James Robinson AP
Education Officer*

Cooperative Charting

Resources for Recreational Boaters NOAA Offers Free Nautical Products for Fun and Safety



NOAA's Office of Coast Survey, the nation's nautical chart maker, provides a suite of products to help make maritime transportation safe for all users. These products, while keeping commerce safely moving through our nation's waterways and ports, provide valuable information to the recreational boating community as well. **Explore these three free NOAA nautical products available to help make your next trip an enjoyable one.**



NOAA BookletChartsTM

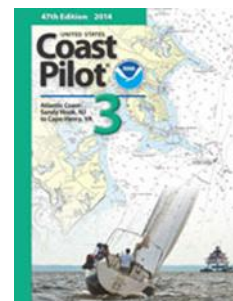
NOAA BookletChartsTM contain all the information of the full-scale nautical chart but is reduced in scale and divided into multiple pages for your convenience. They are updated weekly and printable at home for free. The BookletCharts help recreational boaters locate themselves on the water. Some boaters like to put each page in a sheet protector and keep them handy.

Visit <http://www.nauticalcharts.noaa.gov/staff/BookletChart.html>

United States Coast Pilot[®]

The United States Coast Pilot[®] expands on the information on nautical charts and provides sailing directions for U.S. coastal and intracoastal waterways and the Great Lakes. Within its nine volumes, the Coast Pilot provides a wealth of for commercial and recreational boaters.

Visit <http://www.nauticalcharts.noaa.gov/nsd/cpdownload.htm>



nowCOAST

On the water and need information in near real-time? NOAA's nowCOAST, a web mapping portal, provides access to observations, forecasts, imagery, and geo-referenced layers for all regions of the U.S. nowCOAST is updated at regular intervals throughout the day so boaters can stay aware of the ever-changing environment.

Visit <http://nowcoast.noaa.gov/>

Enjoy your summer on the water.



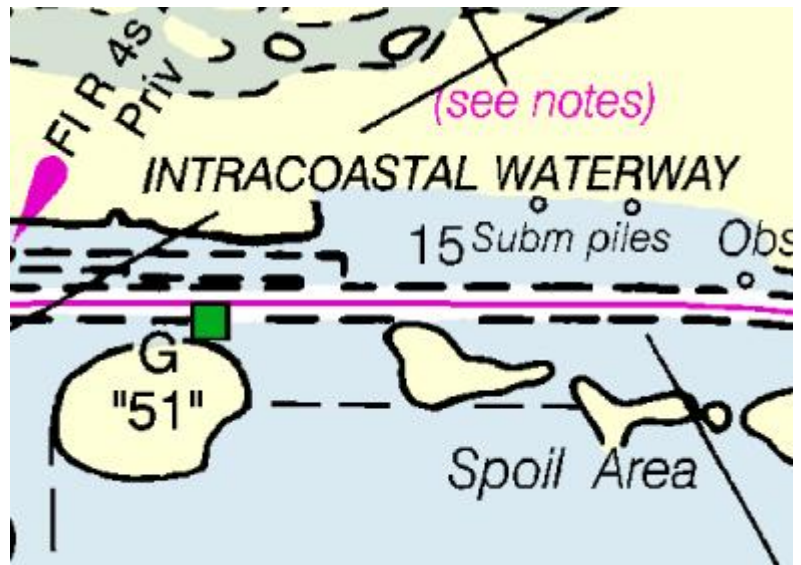
Cooperative Charting

Coast Survey to improve "magenta line" on Intracoastal Waterway (ICW) nautical charts

NOAA's Office of Coast Survey recently announced that future editions of nautical charts of the Intracoastal Waterway will be updated to include an improved "magenta line" that has historically aided navigation down the East Coast and around the Gulf Coast. Additionally, Coast Survey will change the magenta line's function, from the perceived "recommended route" established more than a hundred years ago, to an "advisory directional guide" that helps prevent boaters from going astray in the maze of channels that comprise the route.

The decision comes on the heels of a year's investigation into problems with the magenta line. Rear Admiral Gerd Glang, director of Coast Survey, explained "We cannot deliberately include chart features that we know may pose a danger to navigation.

The problems of the magenta line's misplacement have been developing over the past seven decades." In 2013, Glang issued a Federal Register Notice asking for public comments. The response was 99.9 percent in favor of keeping it on charts."



Captain Shep Smith, chief of Coast Survey's Marine Chart Division, cautions "Today's decision to reinstate the magenta line is not a quick fix. It will take at least three years to fix problems as charts are rotated through the update process. When no depth soundings are on the chart, the line will generally be positioned in the centerline of dredged channels and natural waterways, avoiding shoals or obstructions less than the controlling depth."

"Most of the magenta line can be re-drawn by using the charted information, and we hope to get it done by mid-2015," Smith explains. "On the other hand, resolving discrepancies between charted information and the line will require research, and new data acquisition and processing, with support from other federal agencies."

*P/R/C Stephen A. Leishman, SN
Cooperative Charting Chairman*

WSPS Birthdays/August-September



<i>August-September</i>	<i>Date</i>
John P. Goon	Aug 01
Mark C. Atkinson	Aug 03
Chester M. Gibson	Aug 05
James A. Ennis	Aug 07
Wayne T. Stanford	Aug 07
Barbara L. Sharpless	Aug 09
Roger L. Cason	Aug 13
Richard Van C. Parker	Aug 18
Edward D. Kee	Aug 19
Ronald D. Crooks	Aug 20
Susan K. Leshner	Aug 23
Becky Colbert	Aug 30
Charles P. Schutt Jr.	Aug 30

<i>August-September</i>	<i>Date</i>
Carl L. Stacey	Sept 02
Thomas S. Webster III	Sept 05
Edward H. TenEyck Jr.	Sept 06
Mary Ann Ebersol	Sept 08
Jeffrey J. Bottari	Sept 11
William L. Theis	Sept 12
Joseph D. Irr	Sept 19
Gail Russell	Sept 20
Teresa Ann Butler	Sept 21
Joseph Donia	Sept 22
Carol Parton	Sept 27



Welcome Aboard New Member



Lou Rich and his wife Lisa live in Trainer, PA and keep their 36' Trojan, *Anna Marie*, at North Point Marina in Rock Hall. Lou has been well acquainted with WSPS for about twelve years as his company, Express Printing, not only advertises in it but prints our annual yearbook as well. Over the last couple of years he has also taken on the responsibility of printing the cruise T-shirts.

WELCOME ABOARD Lou and Lisa!

Lt/C Barbara L. Sharpless, P
Secretary

Calendar of Events

www.wspsoaters.com

Weekly Luncheons on Wednesday: 1130
Seasons Pizza, 3901 Concord Pike, Wilm., DE



01-03	Aug.		D/5 Summer Council and Rendezvous, Somers Cove Marina, Crisfield, MD
02	Aug.	1500	WSPS Rt #20 Cleanup
		1600	WSPS Crab Feast, Rock Hall Civic Center
16	Aug.		Bay Jam, Turner's Creek
20	Aug.	1930	WSPS Exec. Committee Mtg., Conectiv Energy & Tech. Ctr., Newark, DE
23-24	Aug.		WSPS Event – Raft-up at Still Pond
07	Sept.		Deadline for October/November/December Lubber's Line Material
07-14	Sept.		USPS Fall Governing Board Meeting, Arlington, VA
09	Sept.	1900	WSPS Fall Educational Courses Begin: Advanced Grades & Elective Courses A.I. duPont High School, 50 Hillside Rd., Wilmington, DE
17	Sept.	1930	WSPS Exec. Committee Mtg., Conectiv Energy & Tech. Ctr., Newark, DE
23-28	Sept.		D/5 Trawler Fest, Harbor View Marina, Baltimore, MD
27-28	Sept.		WSPS Event – Raft-up at Eagle Cove

