



THE LUBBER'S LINE

VOLUME 76, ISSUE 4

January-February 2015

INSIDE THIS ISSUE:

<i>Commander's Message</i>	2
<i>Who's Who</i>	2
<i>In Memoriam</i>	3
<i>Administrative Dept.</i>	4
<i>Boating Safety</i>	5
<i>Education Dept.</i>	5
<i>Cooperative Charting</i>	6
<i>Assemblies 2015-2016</i>	7
<i>November Social Photos</i>	8-9
<i>Mike/Wendy's Party</i>	11-12
<i>Hall of Fame</i>	14
<i>Oyster Dinner Photos</i>	15
<i>Saying Good-Bye</i>	16
<i>Nominees Bridge Year</i>	17
<i>WSPS Birthdays</i>	18
<i>Calendar</i>	19

WELCOME NEW and OLD MEMBERS

P/C Jay Greene, AP, and wife, Wende have recently made several family decisions of importance to our group. First, buy another boat and second, re-activate membership with WSPS after a brief water hobby hiatus. Jay served as our WSPS Commander for the Bridge Year 2007-2008. The Greene's (both daughters are now grown and established elsewhere) reside in the north Wilmington area. They found themselves unable resist the ever present beckoning call of the Chesapeake and the boating hobby. Next chapter! "Das boot" – Jay and Wende along with Jay's parents (see below) are in the process of refurbishing a recently acquired 46' Italian-made powerboat (now re-named *Our Joy*). The bio on the plight of the boat is that in 2010 an unnoticed leaking seawater strainer sunk her in her slip. The Greene's have her up and running, but don't expect her to be once again fully operational until later this summer. The *Our Joy* will be slipped at North Point Marina in Rock Hall.

We are also welcoming back to the USPS fold after a 24 year absence Jay's parents **Norman Greene, AP, and wife Joan, JN.** Norman and Joan previously were long-term members of the Anna Maria Island Power Squadron in Florida and have chosen to re-establish their USPS affiliation by joining WSPS. The couple now lives in the Bryn Mawr, PA area. Norman and Joan have been active boaters for over 40 years starting out with a 19' Sea Ray in the early 70's and concluding with their last boat, a 53' Hatteras, in 2003. As mentioned above, they too, once again bitten by the "Bay bug", have signed on as project crew along with Jay and Wende dedicated to the "rehabbing" of the *Our Joy*.

An enthusiastic WSPS welcome to **P/C Dan Gorman, AP, and wife Dale, S.** who are transferring to WSPS from the Northeast River Power Squadron (NERPS). Dan served as Commander for NERPS from 2003-2004. They live in the Elkton, MD area and have a 28' powerboat, *Aquarius II*, which they summer slip at their community dockage on the Elk River. Their son Brian, married, is in the Air Force stationed in Charleston SC and their daughter Kelsey is a junior at Towson.

WSPS would like to welcome new member **John (Jack) Short.** Jack resides in the Wilmington area and has a 43' powerboat, *Chateaufneuf*, which he slips on Davis Creek off the Chester River. Jack retired from a long successful career in commercial cinematography. Competitive sailing (including Bermuda Race Crew responsibilities) and recreational boating were favorite diversions from his

(Continued on page 18)

**Change of
Watch
Reservation
Form
Page 10**

Wilmington Sail and Power Squadron**Commander**

Cdr. Donald R. Engler, AP
919 Moores Drive
New Castle, De 19720
don@englers.com

Executive Officer

Lt/C John S. Ross, AP
234 North Star Road
Newark, DE 19711-2937
302-235-5856
johnross3@mail.com

Administrative Officer

Lt/C John E. Koval, Jr., P
28 Nancy Street
North East, MD 21901-5133
410-287-2346
rogudley@netscape.net

Education Officer

P/C James Robinson, AP
122 Fairthorne Street
Kennett Square, PA 19348-2847
610-444-5155
jimrobinson37@aol.com

Secretary

Lt/C Barbara L. Sharpless, P
2 Hailey's Trail
Newark, DE 19711-3006
302-239-7995
bdsharpless@verizon.net

Treasurer

P/C Martin G. Wagner, AP
Westover Hills
1013 Overbrook Rd.
Wilmington, DE 19807-2235
mgw1013@comcast.net

Lubber's Line Editor

Lt/Pamela M. Orris, P
11 Neponset Rd.
Wilmington, DE 19810
302-351-8395
pamorris1@verizon.net

**Visit us on the web at:
www.wspsoaters.com**

The Lubber's Line is a publication of the Wilmington Sail and Power Squadron published the first week of January, March, May, August, and October.

***COMMANDER'S
MESSAGE***

Donald R. Engler, AP

***Rolling into
Christmas and 2015***

Thanks for being a member of the Wilmington Sail and Power Squadron! We're pleased that we have folks earning their 25 year pins for membership. Over the last five months I have given out four pins to Betty Parker, Janet Bryson, Lynn Mahaffy and Pat Esterle.

We're also happy to announce that P/C Marty Wagner will soon be receiving his 25 merit mark from our parent organization. There will be more info about this at a latter date.

I would like to welcome Dale and P/C Dan Gorman from the Northeast River Power Squadron as new members. I would also like to welcome Jack Short, a long-time Wilmington resident, to our squadron, and a welcome back to Wende and P/C Jay Greene. Perhaps you may have visited with Jack at the November Assembly or Jay at the Christmas Social at Mike & Wendy's home.

The 2015 Summer Cruise Committee will be meeting early in the new year and would love to have YOU involved! A call or email to P/C David Sharpless or myself will earn you a spot on the committee.

Our schedule is packed as usual this year with the assemblies continuing on 16 January, and Founders' Day on 20 February at the Brandywine Community Center. WS&PS Spring Educational Sail Class will begin on 12 February at the New Castle Sailing Club in New Castle. A very qualified Bill Zimmerman will be the instructor. Our Change-of-Watch will be on 15 March at Schaefer's Canal House in Chesapeake City, MD. A sign-up sheet has been included in this issue. Our Safe Boating Certification Classes begin in March after the Change-of-Watch. Please enter these dates into your calendars, we would like to see you at all of these events!

More info can be found elsewhere in this edition of the Lubber's Line.

Cdr Donald Engler, AP



Sarah Jane Johnston

We were just made aware of the passing (in August) of Sarah Jane Johnston. Jane was a Certificate Holder and supporter of WSPS having earned sixteen Appreciation Marks. She worked closely with the organization supplying assistance when needed, especially during husband Dick's tenure as Commander from 1980-1981.

Sincerest condolences to Dick from your boating friends at WSPS.

C. Harwin Smith

Sadly, WSPS Life Member P/C C. Harwin Smith, SN, (Smitty) passed on 12/29/14. Health issues and climate led to the family's decision to relocate south several years ago ultimately settling in Wilmington, North Carolina. Even then, after the sale of the family boat ("Stinger"- a Mk II 35' C & C) Smitty, the consummate sailor, remained a sought after guest helmsman/tactician on various crafts at any Chesapeake sailing competition in which he chose to participate.

Harwin, ever organizationally energetic, accumulated 29 Merit Marks during his 50+ year squadron affiliation. He served as our Commander (1983-1984), as an Executive Committee Member, as an instructor and chairperson/member of various WSPS committees. Highly respected, he enjoyed a well-deserved national reputation both from within and outside of the USPS network.

Condolences to wife Jane and his family from his friends at WSPS. Jane's address is: 7710-1 Meadowlark Lane, Wilmington, NC 28411-9724.

Arrangements as of this writing are incomplete.

Note: See the article in this issue on his 11 October 2014 induction into the Delaware Maritime Hall of Fame.

Administrative Department

At this special time of the year sincerest of Seasons Greetings and best wishes for a Happy, Healthy New Year to all of our WSPS family.

“Tis the season” to make our lists and check them twice. With the winter solstice just a few weeks away as of this writing, the idea of more daylight prompts thoughts of being on the water once again. We all should be making our repair lists, things to do to make our boating season safer and more enjoyable. The saying, "when winter comes can spring be far behind", is so true. Don't wait until April or May to start your “to do list”; Spring will be here before you know it, so get started now. Research your problems, talk with those who can help you address any puzzling issue. Prioritize your list, things for now and things that can be done later remembering to put safety first. Interested in a course, help us help you, make us aware of your desires. If you have the urge to get involved in teaching or some other facet of our education process, let us know. As we AGE, it is so important to limit the amount of stress associated with getting our boats ready in just a few days. In closing, let me say that a little preparation can go a long way, but proper preparation will help insure a safer and more enjoyable boating season.

Belatedly I hope you were able to attend the WSPS Christmas Social on 7 December at Mike and Wendy’s home. Don’t forget to make a note of the upcoming 16 January Social featuring Donna and Bill Zimmerman’s summer sail north.

*Lt/C John E. Koval, Jr, P
Administrative Officer*



**WSPS FOUNDER'S DAY AND ANNUAL MEETING
Friday, 20 February 2015**

Our February assembly will celebrate Founder's Day and also the annual meeting.

The evening begins at 1830 (6:30 PM) with appetizers and soft drinks and continues with dinner at 1900. Dinner will include pizza, salad and ice cream. The cost this year is \$9.00 for adults and \$4.00 for children under 12.

All of our fall and winter meetings will be held at the Brandywine Community Center on Naamans Road, just off Concord Pike (Route 202). The Community Center is a free-standing building with a dome, and is by the fountain in front of the shopping center.

Reservations are due by Tuesday, 17 February 2015. For purposes of food planning, please let me know of any cancellations (302)-633-1733 or bkooingram@verizon.net.

WSPS Assemblies Committee - Betty & John Ingram, Geri Walker, Zelma Robinson, Anne & Mike Minard, Donna Zimmerman, Sue Engler, Judy Stadler, Bev and Bart Wilson.

Boating Safety News

Carbon Monoxide (CO) Poisoning

Carbon Monoxide is produced by the incomplete combustion of fuel. Because it is a colorless, odorless, non-irritating and tasteless gas it goes without detection by humans until symptoms of exposure occur. Its high affinity for hemoglobin results in carboxyhemoglobin (COHb) which prevents hemoglobin from releasing oxygen in tissues - a reduction in the oxygen carrying capacity of the blood (hypoxia).

Long term exposure even to low levels of carbon monoxide can result in confusion, memory loss, lightheadedness and flu like symptoms and sometimes misinterpreted as sea sickness.

An average room may have 3 to 4 parts per million (ppm) of CO in the air, 50 ppm or less is an OSHA & EPA acceptable workplace limit if averaged over an 8 hour period. At 40 to 60 ppm alarms go off and 70 ppm presents an acute danger.

Initial treatment involves removal of the person to fresh air, administering oxygen if available and CPR if needed - ALWAYS call for help. The half life of COHb is about 5 hours. Exposure time and concentration levels determine what effect the exposure will have on the body.

The number one boating source is your boat's engine or the engines of boats close to you. Additional sources are gas stoves, grills, space heaters and generators.

A carbon monoxide detector is recommended for your boat, as well as homes where fuels are burned

Lt David L. Benfer, JN
Boating Safety News



Education Department

The Sail course is scheduled to begin Thursday, 12 February 2015 at the New Castle Sailing Club in New Castle, DE starting at 1900. This course is composed of two modules, Sail 101 - Basic Sail and Sail 102 - Advanced Sail. Please refer to page 25 in the WSPS Yearbook for course highlights and overview. National needs a 30 day lead time for course materials, therefore, class reservations are requested no later than 12 January 2015. Times and dates for the Spring Certification classes will be announced at a later date.

If you have any interest or questions in any courses or seminars, please contact Jim Robinson at 610-444-5155 or jimrobinson37@aol.com

P/C James Robinson, AP
Education Officer

Cooperative Charting

It is often said that history repeats itself. This may be true for the USPS Geodetic Mark Recovery program. About six years ago this popular program was closed by our leadership for a variety of good reasons. Today, with the advent of new technology and miniaturization, our leadership is seriously considering restarting this program in the near future.

Geodetic marks are highly accurate reference points established on the surface of the earth by local, state, and national agencies. Maintenance and preservation of these marks is of utmost importance to users of the net and to NGSD, recognizing that many valuable geodetic marks are destroyed by construction, new roads, erosion, or for other causes. Our job is to locate each of these marks and report their condition together with any change in the directions needed to locate them.

At one time there were over one million of these marks. Normally, geodetic marks are round bronze disc, roughly 3 inches in diameter, firmly imbedded in concrete, bedrock or on a long rod driven into the ground. They may be horizontal to the earth's surface or vertical as is the one shown in the picture which is part of the zero mile marker in Richmond, VA.

The objective of this cooperative charting geodetic mark recovery program is to locate and identify a mark and to report on its condition as Good, Poor, Not Found, or Destroyed. One way to show the accuracy of mark's location of the marker would be to use a handheld GPS lying next to the mark showing its coordinates. A digital picture of the mark with the GPS would capture a date-time stamp on the picture and the GPS coordinates.



Expect to see more information to come out about this effort after the 101st Annual USPS meeting in Jacksonville next month.

*P/R/C Steve Leishman, SN
Cooperative Charting Chairman*

2015 CRUISE REMINDER

The WSPS Annual Summer Cruise for 2015 is scheduled for the week of 21-26 June 2015 with Cdr. Don Engler, AP, and P/C David Sharpless, AP, Co-Chairing the Cruise Committee. Please mark your calendars accordingly. At this early date, the itinerary, activities, and highlights are yet to be determined. Pre-registration, as always, is requested for planning purposes.

WSPS 2014 FALL ASSEMBLY

The Fall Assembly for 2014-2015 was held on Friday, 14 November. Sue Engler welcomed the 56 members and guests in attendance. We all enjoyed delicious appetizers with lasagna and salad for dinner followed by assorted pies for dessert.

Our guest speaker, Laura Lee, Program Manager from the State of Delaware, shared some of the history of Fort Delaware State Park. She debunked the tale that Pea Patch Island began as pea plants growing on a mud flat; however, she shared other interesting authentic stories. Many were based on letters and journals written by the prisoners and families that lived on the island during the 1800s. There were 33,000 prisoners interned at the fort during the civil war. Apparently the lack of much to do on Pea Patch Island resulted in a wealth of written historical documents. Laura also told us about the recent filming of Ghost Hunters at the fort. She encouraged us to take the ferry to the island in the spring/summer to experience living history with programs at the fort.

The evening continued with comments from Commander Don Engler and P/C Dave Sharpless about the coming year's events. P/C John Ingram spoke about the Wilmington Seamen Center and the Christmas at Sea program. Shoe boxes were distributed with a list of items to give to these sailors.

The following assemblies are planned: the Holiday Social in December, the Zimmerman's trip to Newfoundland in January, and the Founder's Day Social and Annual Meeting in February.

Thanks to all the members of the assemblies committee and to all that attended.

*P/C John Ingram, AP
Lt Betty Ingram, P*



WSPS JANUARY ASSEMBLY SAILING THE SOUTHWESTERN COAST OF NEWFOUNDLAND Friday, 16 January 2015

For our first 2015 Assembly, P/C Donna and Bill Zimmerman will be doing a presentation on their 2013 cruise from Rock Hall, MD to Newfoundland

The evening begins at 1830 (6:30 PM) with appetizers and soft drinks and continues with dinner at 1900. Dinner will include subs, chips and brownies. The cost this year is \$9.00 for adults and \$4.00 for children under 12.

All of our fall and winter meetings will be held at the Brandywine Community Center on Naamans Road, just off Concord Pike (Route 202). The Community Center is a free-standing building with a dome, and is by the fountain in front of the shopping center.

Reservations are due by Tuesday, 13 January 2015. Please let me know if you are unable to attend (302) 633-1733 or email - bkooingram@verizon.net.

WSPS Assemblies Committee - Betty & John Ingram, Geri Walker, Zelma Robinson, Anne & Mike Minard, Donna Zimmerman, Sue Engler Judy Stadler, Bev and Bart Wilson.

WSPS November Social



WSPS November Social





WILMINGTON SAIL and POWER SQUADRON
CHANGE OF WATCH

Sunday, 15 March 2015

Schaefer's Canal House
206 Bank Street
Chesapeake City, MD 21915

Arrive at 1200 to socialize with friends. Drinks may be purchased from the bar.

Lunch – 1230

Schaefer's Salads

Caesar Salad: Crip Romaine, Parmesan and Croutons

Spinach Salad: Baby Spinach Leaves, Sliced Strawberries, & Toasted Almonds

Entrees

Schaefer's Broiled Crab Cake

C&D Chicken Breast: Lump Crab Meat Imperial with Fresh Lemon Cream Sauce

Gilled Bistro Steak Medallions with Mushroom Peppercorn Butter

CHANGE OF WATCH CEREMONY – 1330

Please forward your reservation slip and check **payable to WSPS** to:
 Don Engler, 919 Moores Lane, New Castle, DE 19720 by **Monday, 9 March 2015**

WILMINGTON SAIL and POWER SQUADRON
CHANGE OF WATCH
Sunday, 15 March 2015

Names of Attendees: _____

@ \$25.00 per Person = \$ _____

WSPS Christmas 2015 - Wendy & Mike's Home

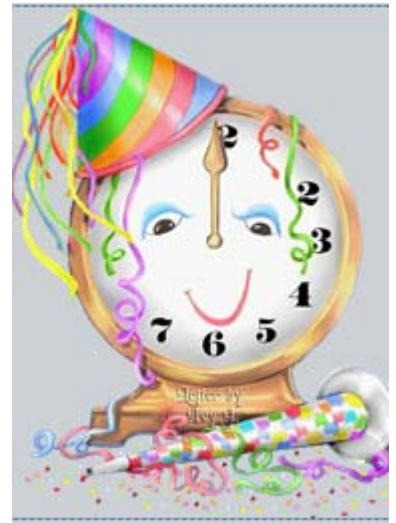


HAPPY
NEW
YEAR

2015



WSPS Christmas 2015 - Wendy & Mike's Home



Story of Two New Members

Last year my wife Leslie Brower and I joined the Wilmington Sail and Power Squadron so we could meet boaters. This was the beginning of our new learning journey for both of us to be competent sailors. We had recently moved to Wilmington from Ohio and the move represented an opportunity to sail, something that I enjoyed a great deal growing up on the New Jersey shore.

As a small boy, I remember my father speaking well of the Power Squadron as a place to learn about safe boating and also where it was fun to learn from others about the boating experience. Now, fifty years later, Leslie and I joined for the same reasons. Our goals are to learn about boating and to enjoy a new community of friends. It has worked out very well.

Our plan started by convincing Leslie this was all going to be fun, so our first course was a week's training sail in the Caribbean. It worked! We quickly completed the Squadron's basic boating safety class followed by basic and advanced navigation. In between we completed some ASA classes with the Maryland School of Sailing and wrapped up this sequence with the Seamanship class, which was easier after taking all the others.

We have found Squadron members to be very friendly and willing to share their knowledge. Both of us have received encouragement from members to participate and learn more. We were invited by Sue and Don Engler to sail on their boat, Jubilee, for "A Day on the Water". Teresa and Richard Butler invited us for an overnight sail to Langford Creek where we got a close-up view of the Chesapeake Sail Canoe races. In both cases we were encouraged to sail with them, not just ride along.

At the 2013 Holiday Social Don Engler asked if we would be participating in the annual June Cruise. I said no as I do not have a boat. He explained that being boat-less was not a barrier and encouraged us to look into chartering. He and Sue also reassured us that Squadron members would make sure we would survive and have fun at the same time. They were so right. Before and during the cruise Judy and Chuck Stadler were great mentors, as well as neighbors -- their boat was just across the dock at Harbor Haven Marina. They helped us with docking strategy and general preparations, joined us for dinner in Baltimore's Fells Point, and prevented us from making a few really dumb mistakes, like sailing out to practice maneuvers with a tad too much wind.

Leslie and I thoroughly enjoyed meeting other Squadron members during the June cruise. Everyone made us feel welcome and part of the group. We also found that we partnered well, even during the rallies, learned new boating skills and a good deal of the northern Chesapeake Bay.

It may not take a village to make a sailor but the Squadron has demonstrated that many hands make a better boater as well as a happier one. We especially appreciated the extra efforts of our formal instructors David Sharpless, Jim Robinson, Judy and Chuck Stadler and Mike King who gave graciously of their time and expertise. We look forward to continuing our learning journey and becoming better sailors.



Lt Bruce Wyngaard, AP

C. Harwin Smith is inducted into the Delaware Maritime Hall of Fame



On Saturday 11 October 2014 the 9th Annual Meeting of the Delaware Maritime Hall of Fame induction night was held at the Lewes Yacht Club. Friend, educator, sailboat captain, Commander, and SN full certificate holder, C. Harwin Smith accepted his spot among the many outstanding leaders.



Many of his friends, sailing buddies, and family members attended a delicious dinner and excellent ceremony that followed.



Jane and Harwin Smith



Harwin giving his acceptance speech



Accepting his award from Elaine Simmerman



Visiting friends



Family members



Visiting friends & family



2nd Annual Oyster Dinner @ The Wellwood

The Second Annual Oyster Dinner was held again at the Wellwood Restaurant in Charlestown, MD. As you can see we had 12 more folks attending than last year and it forces us to become closer and more friendly. The food was delicious and the service delightful. We enjoyed this location!



Cdr Engler presented Janet Bryson with her 25 year service pin and thanked her for the time she devoted to the Wilmington Sail & Power Squadron.



P/C Dave Sharpless thanked Joe Irr for his help in allowing the WSPS summer cruise to visit the St. Michaels Museum.



Wellwood's owner Larry, shared some history with us.



Dear Friends,

We have very recently left Delaware to settle in the Fort Lauderdale area of South Florida where we will be close to one of our children. A good idea, we think, as we age.

We have loved our 24 years of membership in the Wilmington Sail and Power Squadron! The cruises, the raft-ups, the assemblies, the friendships, have all enriched our lives and will forever enrich our memories.

We hope to hear from you as you cruise, drive or fly south. Our telephone number is: (954)-978-3279.

Remember! *“Keep the water out of the boat.
Keep the boat off the ground.
Everything else can be worked out.”*

Mary and Carl Stacey



Nominees for the 2015-2016 Bridge Year

As the current Bridge year is soon coming to a close, the Nominating Committee is pleased to announce the following candidates for next year's Bridge, Executive Committee, Audit Committee, Rules Committee, and Nominating Committee. The Nominating Committee, on behalf of our general membership, wishes to extend thanks to all of those dedicated members who have agreed to serve. The vote on these nominations will be held at the 20 February 2015 Founder's Day Assembly which begins at 1830 at the Brandywine Community Center off Naaman's Road.

The nominees for the 2015-2016 Bridge Year are as follows:

Bridge Nominees:

Commander: P/C W. Michael King, AP
Executive Officer: Lt/C John S. Ross, AP
Education Officer: P/C James Robinson, AP
Administrative Officer: Lt/C John E. Koval, Jr., P
Assistant Admin. Officer: Lt Bruce A. Wyngaard, AP
Secretary: Lt/C Barbara L. Sharpless, P
Assistant Secretary: Lt Susan F. Engler, P
Treasurer: P/C Martin G. Wagner, AP

Executive Committee General Members:

P/C Richard A. Butler, JN
P/C Donald R. Engler, AP
P/C John G. Ingram, AP
P/C Jay R. Minshall, AP
P/C C. David Sharpless, AP

Audit Committee:

P/C John G. Ingram, AP (Chairman, 2 year term)
P/Lt/C John A. Bryson, AP (1 year term)
Lt Thomas S. Webster, SN (1 year term)

Rules Committee:

P/C John G. Ingram, AP (Chairman, 1 year term)
P/C Donna F. Zimmerman, JN (2 year term)
P/C Donald R. Engler, AP (3 year term)

Nominating Committee:

P/C John G. Ingram, AP (Chairman, 1 year term)
P/C C. David Sharpless, AP (2 year term)
P/C Donald R. Engler, AP (3 year term)

Respectfully submitted by the Nominating Committee:

P/C John G. Ingram, AP, Chair

P/C James Robinson, AP

P/C Judith C. Stadler AP





WSPS Birthdays/January - February

<i>Jan-Feb</i>	<i>Date</i>
Robert V. A. Harra, Jr.	Jan. 02
Lois B. Radcliff	Jan. 02
James Robinson	Jan. 04
Irene duPont, Jr.	Jan. 08
David I. Netting	Jan. 21
Richard Parton	Jan. 21
Mike Minnard	Jan. 22
Robert G. Danehower.	Jan. 27

<i>Jan-Feb</i>	<i>Date</i>
Patricia S. Maher	Jan. 28
Pierce W. Johnston, Jr.	Jan. 29
George C. Bentley	Jan. 30
Sue F. Engler	Feb. 11
Francis Richardson, Jr.	Feb. 12
D. Jeffrey Russell	Feb. 12
Paul David Ehrlichman	Feb. 13
Pat Esterle	Feb. 17

(Continued from page 1)

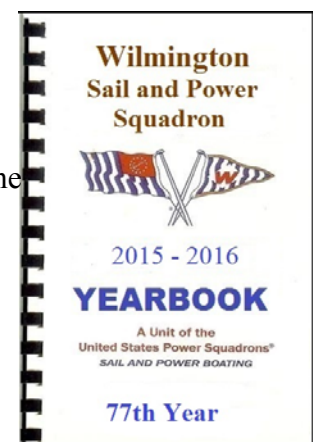
remarkable professional responsibilities. Jack can still be found enjoying helm time on his personal craft(s) as well as an occasional assignment as a contract delivery captain.

Welcome back to Jay and Wende - we have missed you. Norman, Joan, Dan, Dale and Jack an enthusiastic "Welcome Aboard". We hope to see you all at our upcoming shore side activities (socials).

P/C C. David Sharpless, AP



It's getting close to the time for our 2015 - 2016 yearbook to be assembled and printed. If you have any changes to your listing in the members roster section of the 2015 - 2016 yearbook, please e-mail your changes to Barbara Sharpless at bdsharpless@verizon.net.



All photos courtesy of Cdr Donald Engler, AP and Lt Sue Engler, P

Calendar of Events

www.wspsoaters.com

Weekly Luncheons on Wednesday: 1130

Seasons Pizza, 3901 Concord Pike, Wilm., DE



16 Jan.	1830	WSPS Social, Brandywine Community Center
18-25 Jan.		USPS Annual Meeting, Hyatt Regency Jacksonville Riverfront, Jacksonville, FL
21 Jan.	1930	WSPS Executive Committee Meeting Conectiv Energy & Technology Center, Newark, DE
07 Feb.		Deadline for March/April Lubber's Line Material
12 Feb.	1900	WSPS Spring Educational Courses Begin Elective Course-Sail, Location-New Castle Sailing Club
18 Feb.	1930	WSPS Executive Committee Meeting Conectiv Energy & Technology Center, Newark, DE
20 Feb.	1830	WSPS Annual Meeting & Founders' Day Social Brandywine Community Center
21 Feb.		D/5 Winter Training Session Southern Maryland Higher Education Center, California, MD
15 Mar.	1200-1500	WSPS Change of Watch Schaefer's Canal House, Chesapeake City, MD
18 Mar.	1930	WSPS Executive Committee Meeting Conectiv Energy & Technology Center, Newark, DE
26-29 Mar.		D/5 Spring Conference, Princess Royale Hotel, Ocean City, MD
31 Mar.		Cruise Registration Due

